

## Bag1

**Catalog Number:** 21231

**Gene Symbol:** BAG1

**Description:** Anti-Bag1 Rabbit Polyclonal Antibody

**Background:** BAG family molecular chaperone regulator 1 is a protein that in humans is encoded by the BAG1 gene. It binds to oncogene BCL2, by which enhances the anti-apoptotic effects of BCL2 and represents a link between growth factor receptors and anti-apoptotic mechanisms. BAG gene has been implicated in age related neurodegenerative diseases as Alzheimer's. It has been demonstrated that BAG1 and BAG 3 regulate the proteasomal and lysosomal protein elimination pathways, respectively.

**Immunogen:** A synthetic peptide from the central region of Bag1 protein, human origin.

**Tested Applications:** ELISA, WB, IHC

**Recommended Dilutions:**

ELISA	1:500-1:5000
WB	1:200-1:2000
IHC	1:20-200

**Concentration:** 0.2 mg/ml

**Host:** Rabbit

**Clonality:** Polyclonal

**Purity:** Purified from serum

**Format:** Liquid

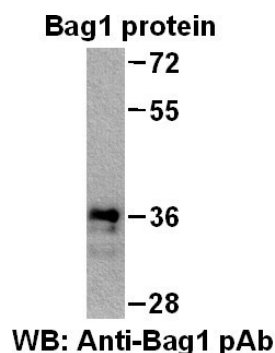
**Preservative:** No

**Constituents:** PBS (without  $Mg^{2+}$  and  $Ca^{2+}$ ), pH 7.4, 150 mM NaCl, 50% glycerol

**Species Reactivity:** Anti-Bag1 rabbit polyclonal antibody recognizes Bag1 from vertebrates.

**Storage Conditions:** Store at  $-20^{\circ}C$ . Avoid freeze / thaw cycles

Western blot:



**Western blot analysis of recombinant Bag1 protein.**

Purified full length His-tagged Bag1 protein was blotted with anti-Bag1 rabbit polyclonal antibody (Cat. # 21231).

FOR RESEARCH USE ONLY. NOT FOR DIAGNOSTIC APPLICATIONS